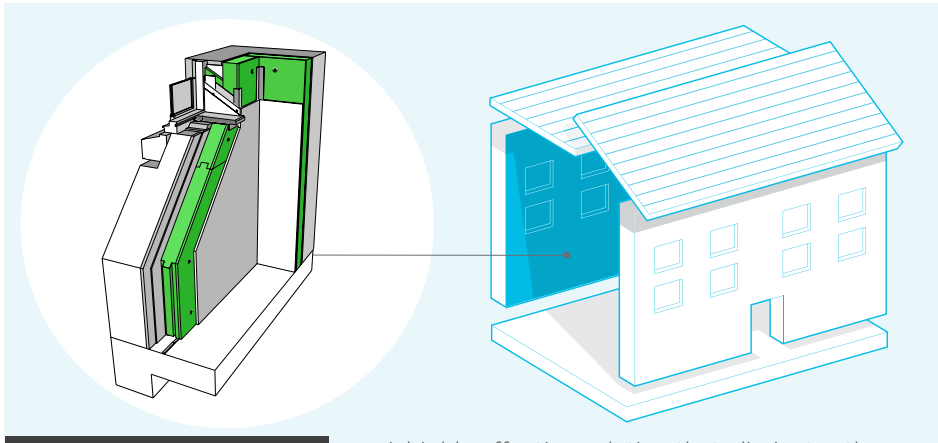


Retrofit System for Internal Wall Insulation Dry Lined



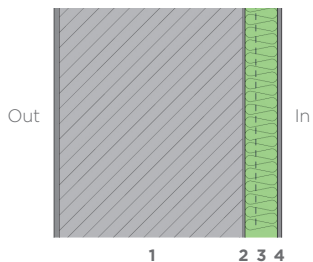
System Performance

u - values 0.60 - 0.28

airtightness 5 - 3 @50pa

A highly effective solution that eliminates the moisture risk associated with IWI. NBT IWI systems use **Pavadry** to provide active moisture control through absorption and redistribution of moisture within a woodfibre board and integral mineral layer. The system incorporates a composite board, that is drylined with plasterboard, providing a load bearing surface. Installed and made good within a day, the system provides a clean lined modern finish.

Cross-section of system

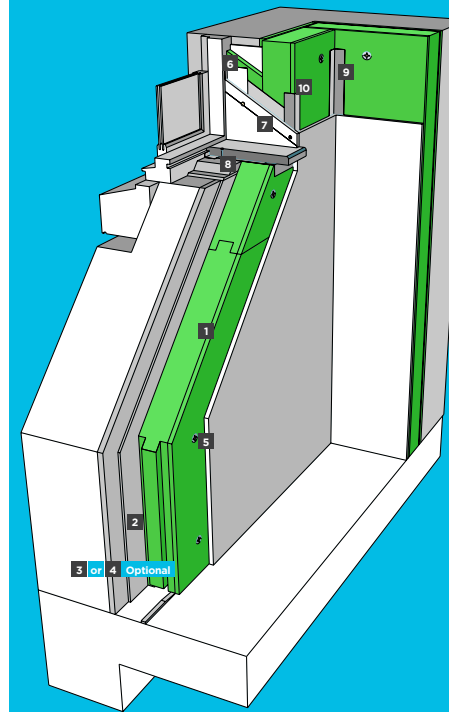


1. External wall (masonry/stone)
2. NBT absorbent plaster (min 5mm)
3. NBT Pavadry
4. Plasterboard or Fermacell board

How NBT systems compare to standard build



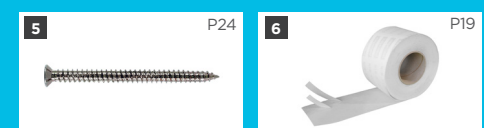
Components & Accessories for NBT Internal Wall Insulation System Dry Lined



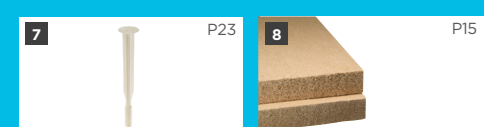
1 Pavadry P13 2 RK70 Internal Bonding & Base Coat P27



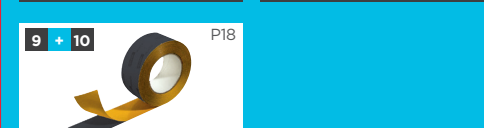
3 RK38, Internal Levelling Coat (Optional) P27 4 Speedfill (Optional) P25



5 MRS-U P24 6 Pavafix WIN, plaster tape P19



7 DDA 8/25 x L Reveal Fixings P23 8 Reveal Board P15



9 + 10 Pavafix 20/40 and Pavafix 60 Internal Tape P18

On SLAB floors, fit Iso-Blocco Compriband Tape under the bottom of Pavadry boards to seal junction between floor and Pavadry.

On SUSPENDED floors, the insulation system should continue down into the joists area and the Iso-Blocco should be used around the joist ends.

* Please refer to www.natural-building.co.uk or the contents page of this pack to find more information about the range of NBT products

System build up



Acara Concepts Ltd
 Killossery
 Kilsallaghan
 Co Dublin, Ireland
 Tel IRL: +353 (0)1 8409 286
 Tel UK: +44 (0)20 7998 1690
www.acaraconcepts.com
info@acaraconcepts.com